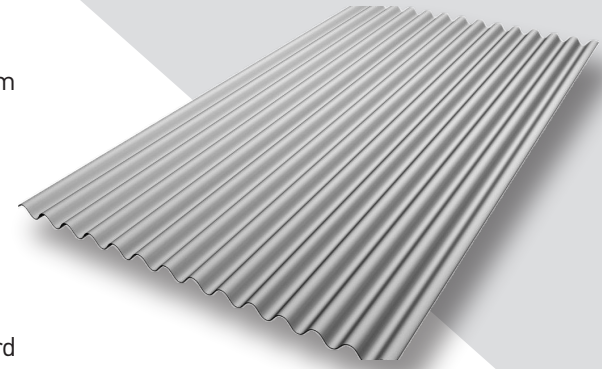


2.67" X .5" CORRUGATED WALL PANEL SYSTEM

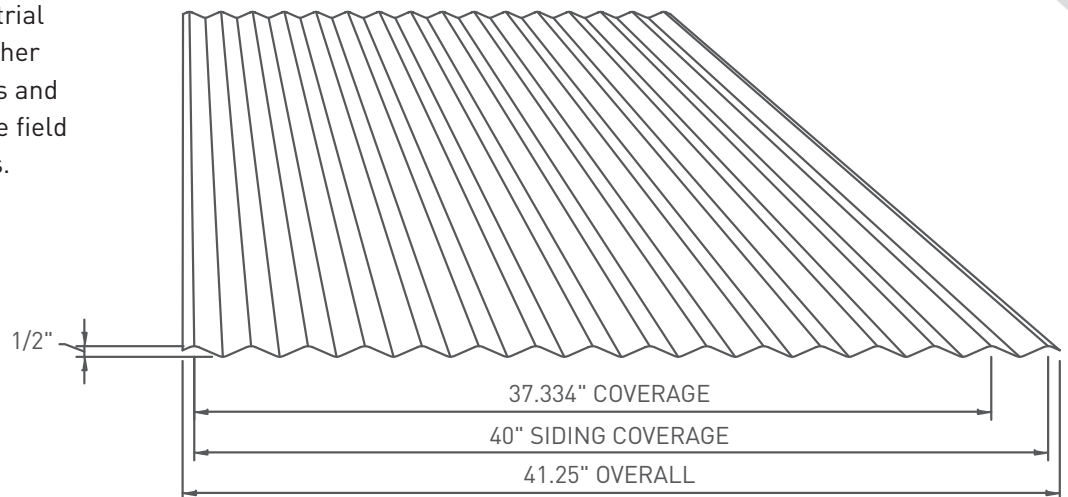
Englert offers a full line of commercial/industrial wall panels, available in a wide range of colors all in a Kynar 500[®] paint finish that meet specific aesthetic and corrosion resistance requirements. Architects and builders can choose from a variety of Englert's economical and durable wall panel systems, suitable for use in pre-engineered metal building applications, agricultural structures, commercial buildings and industrial buildings.



Englert 2.67 inch x .5 inch Corrugated Wall Panel System

Englert's 2.67 inch x .5 inch Corrugated Wall Panel System is ideal for standard applications requiring both durability and economy.

All of the Englert Commercial/Industrial Wall Panels can be designed with either rigid board insulation, or liner panels and fiber glass batt insulation, to produce field assembled, insulated siding systems.



2.67" X .5" CORRUGATED LOAD TABLE

STRESS GOVERNING: 37 ksi yield for 18 and 20 Ga; 50 ksi for 22 and 24 Ga (PSF)

	THICKNESS	# SPANS	SPAN LENGTH											
			2' 6"	3'	3' 6"	4'	4' 6"	5'	5' 6"	6'	6' 6"	7'	7' 6"	8'
STANDARD STOCK	24 Ga STL.	1	105	73	53	41	32	26	21	18	15	13	-	-
		3	131	91	67	51	40	32	27	22	19	16	14	12
	22 Ga STL.	1	130	90	66	51	40	32	27	22	19	16	14	12
		3	163	113	83	63	50	40	33	28	24	20	18	15
NON-STANDARD STOCK	20 Ga STL.	1	114	79	58	44	35	28	23	19	17	14	12	-
		3	143	99	73	56	44	35	29	24	21	18	16	14
	18 Ga STL.	1	150	104	76	58	46	37	31	26	22	19	16	14
		3	187	130	95	73	57	46	38	32	27	23	20	18

Non-Standard Stock available upon request.

Englert reserves the right to revise, add or delete any detail or information herein without prior notice.